

Extending possibilities

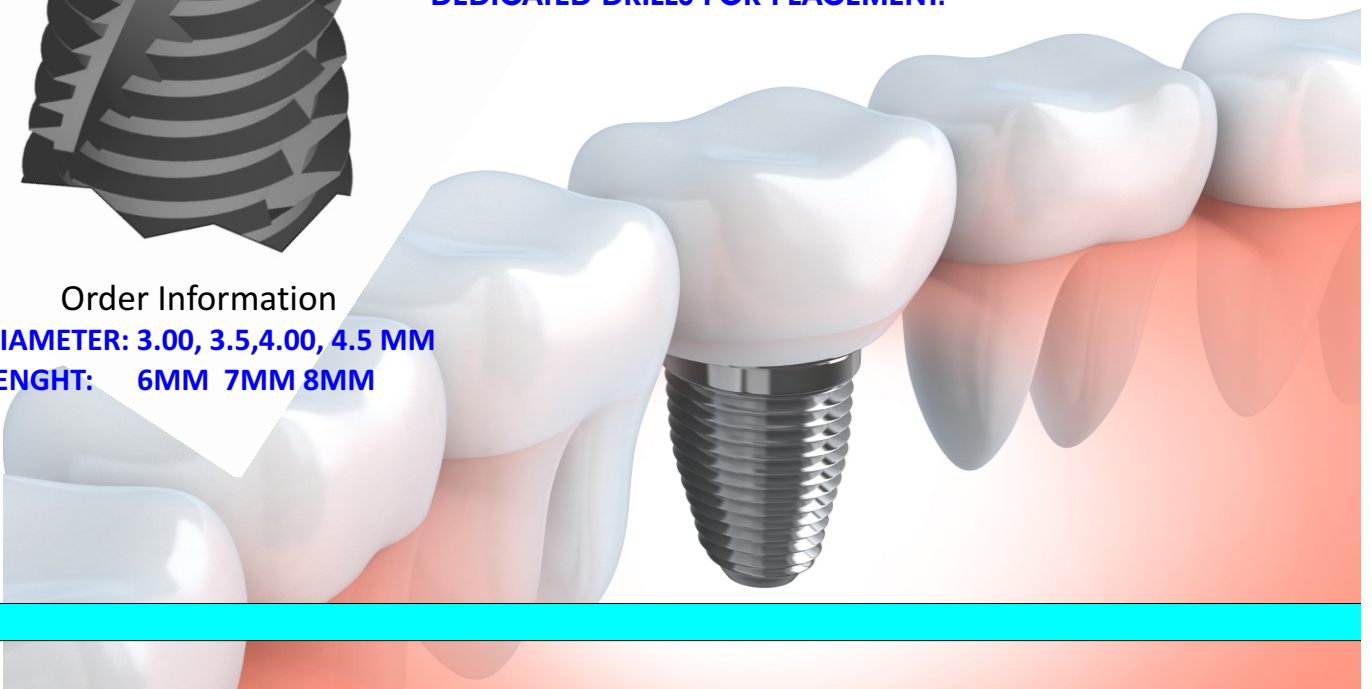
UNIQUE APICAL DESIGN WITH DIMPLE
FOR BONE FILLER AND ROUNDED APICAL DESIGN TO
LIFT SINUS LINING WITHOUT TEARING.
RANGE OF LOW BONE TRAUMA SIZES
DEDICATED DRILLS FOR PLACEMENT.

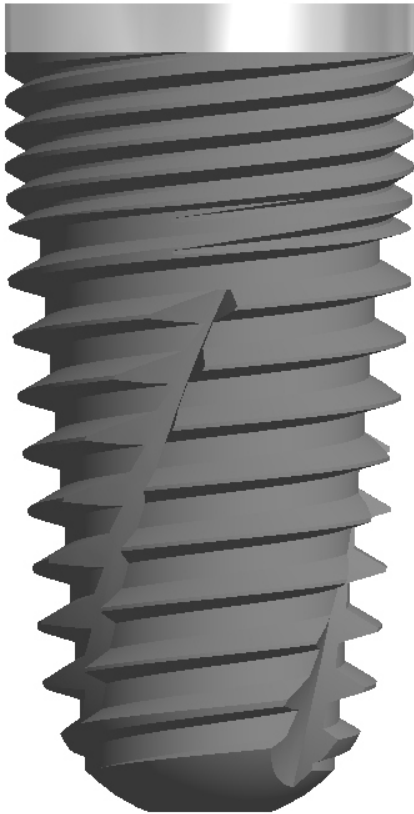


Order Information

DIAMETER: 3.00, 3.5, 4.00, 4.5 MM

LENGTH: 6MM 7MM 8MM





XCEM /DCL is manufacturer of innovative surgical synthetic biomaterial technologies, Biphasic Phosphate (HA/ β -TCP), with micro and macro porosity

Synthetic Bone fillers

Calcium Hydroxyapatite (HA) is a major component of the mineral phase of human bones and teeth. Its chemical composition similar to the chemical phase of bone tissues, it is a biocompatible osteoconductive material . HA provides a stable Micro porous scaff old for cell adhesion while β -TCP, more soluble and with fast bio-reactivity, enhances the fast ingrowth of bone regenerative cells.

The calcium and phosphate ions released, stimulates the formation of bone s. This speci c biphasic composition provides optimum performances in regeneration of bone.

The interconnected macropores and micropores provides porosity of over 70%, similar to cancellous bone. The total surface is filled by migrating body own cells. Tthe material is resorbed and replaced bone fresh bone.

The interconnected macropores and micropores provides porosity of over 70%, similar to cancellous bone.

The total surface is filled by migrating body own cells. Tthe material is resorbed and replaced bone fresh bone.

BOVINE Xeno BONE

Harvested from certified suppliers.

Very carefully deproteinized, defatted and rendered non antigenic by special process. Hihgly refined process. Terminally sterilized by Gamma Irradiation.

Assure fast quality bone regeration